



ASPIRE

— TO MOVE —



Rivers Street, Bath, BA1

Video and physical viewings available. Stunning six double bedroom property available for occupation from the 11th July. The property is available for six professional sharers or six mature students.

Rivers Street is located north of Bath City centre, just 0.3 miles from Milsom Street. There are local shops on Julian Road, 0.1 miles away which include a Co-op.

£4,770 PCM

Rivers Street, Bath, BA1

- Six bedroom HMO
- Three reception rooms
- Available 11th July
- Holding Deposit: £1100
- 6 week deposit
- Four bathrooms
- City central location
- Council tax band G if applicable
- Furnished
- Students or professional sharers

Video and physical viewings available. Stunning six double bedroom property available for occupation from the 11th July. The property is available for six professional sharers or six mature students.

Rivers Street is located north of Bath City centre, just 0.3 miles from Milsom Street. There are local shops on Julian Road, 0.1 miles away which include a Co-op.

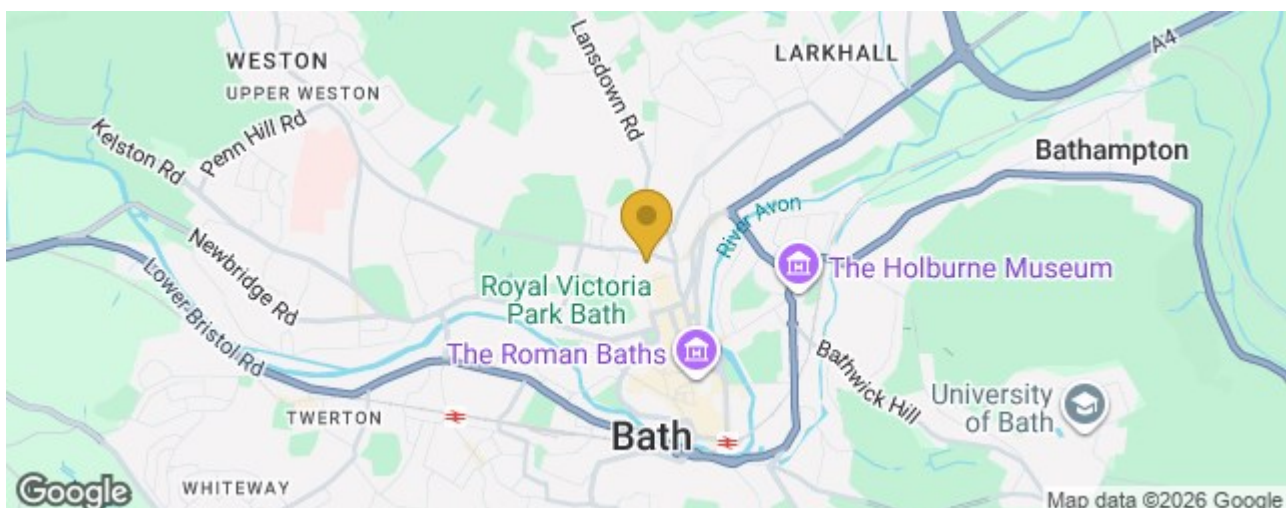
From the charming period features such as feature fireplaces, tiled flooring, tall windows and two outside areas to the modern décor, appliances (fridge freezer, washing machine & tumble drier) included it has everything you would want.

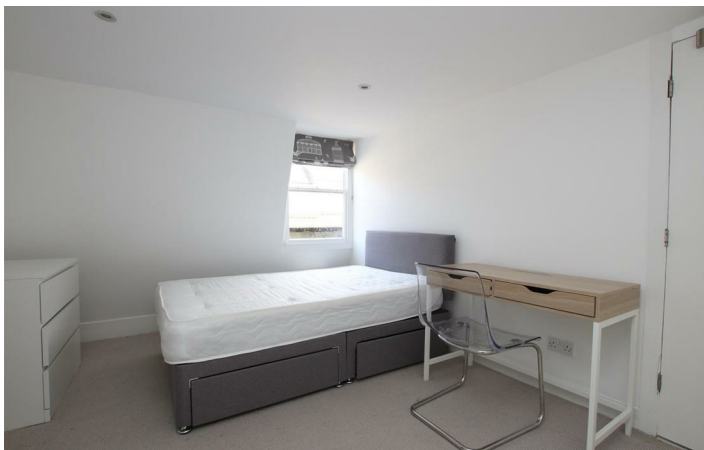
The basement level & ground floor can be used as living areas, with three reception rooms, kitchen two outdoor spaces and a shower and WC. The first reception room has a sideboard whilst the dining area includes a dining table & four chairs.

The remaining three floors are neatly laid out providing a mixture of bedrooms & bathrooms. Each bedroom has bed, wardrobes or built in storage, a desk and a chair, some even include bedside tables and a drawer unit.

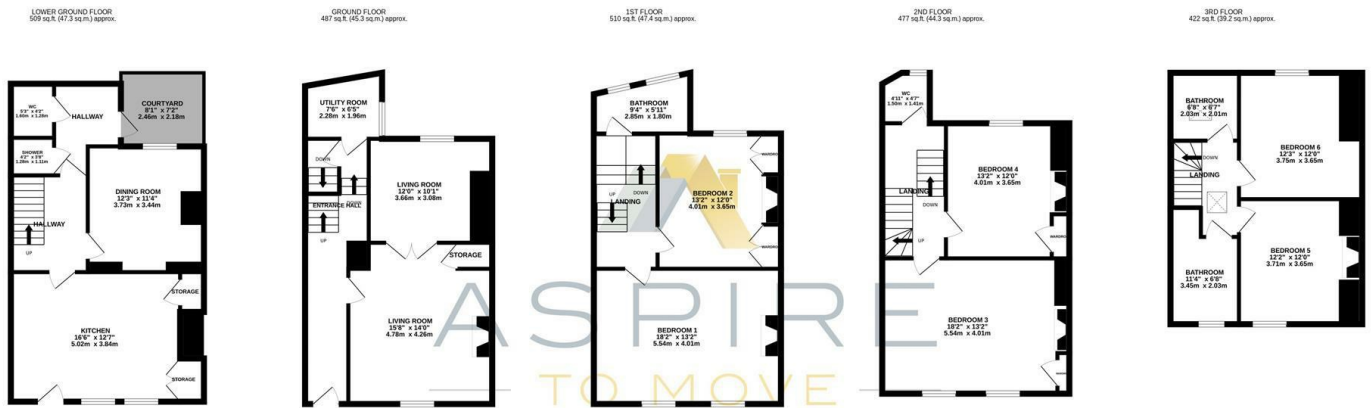
Available to six professional sharers or mature students from the 11th July 2026.

Council tax band G if applicable.





Floor Plan



RIVERS STREET, BATH, BA1

TOTAL FLOOR AREA : 2405 sq.ft. (223.5 sq.m.) approx.

Whilst every attempt has been made to ensure the accuracy of the floorplan contained here, measurements of doors, windows, rooms and any other items are approximate and no responsibility is taken for any error, omission or mis-statement. This plan is for illustrative purposes only and should be used as such by any prospective purchaser. The services, systems and appliances shown have not been tested and no guarantee as to their operability or efficiency can be given.
Made with Metropix ©2026

These particulars, whilst believed to be accurate are set out as a general outline only for guidance and do not constitute any part of an offer or contract. Intending purchasers should not rely on them as statements of representation of fact, but must satisfy themselves by inspection or otherwise as to their accuracy. No person in this firm's employment has the authority to make or give any representation or warranty in respect of the property.

